



REBAR TRAINING

For Installers



The Hilti Rebar training is a mix of theory and hands-on session.

The course explains the basics of how to install rebar correctly and safely. It can be tailored to your own needs on your own jobsite, or you can join a planned session at our local Hilti premises.

The Training duration is 2.5h (Theory and Hands-on) for Minimum of 5 to Maximum 10 participants. After the training, participants will be getting training handouts as well as certificate of attendance.

YOUR BENEFITS

- The ability to make reliable installations with adequate quality of work execution
- Provides peace of mind by helping to ensure that the installation is carried out safely and correctly
- Increases productivity by reducing mistakes and rework
- Reduce wastage of chemical anchors through proper installation and correct volume calculation
- Recognition is provided in the form of a participation certificate for successful completion of the training

SERVICE SCOPE

- Installing post-installed rebar correctly and efficiently (hands-on exercises and theory)
- Reading and following the instructions for use of the various products
- Handling post-installed rebar installations safely and reducing potential accident risks
- Identifying the key influences on the performance of post-installed rebar

COMMON MISTAKES

- Drilling incorrect diameter of bore hole
- Drilling incorrect depth of bore hole
- Drilling too close to the edge of concrete; resulting in splitting failure - incorrect edge distance
- Incorrect or insufficient bore hole cleaning
- Incorrect mortar injection techniques
- Dispensing too much or too little injectable mortar
- Not using piston plugs for deep hole or overhead applications
- Loading post-installed rebar before recommended curing



Balcony crash due to insufficient rebar reinforcement



REBAR TRAINING

For Installers



REBAR TRAINING FLOW



Trainer explains theory and installation steps



Hands-on: Installation techniques with Hammer drilling and chemical anchors



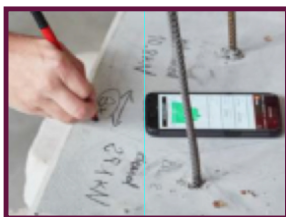
Hands-on: new innovative techniques in drilling and installation



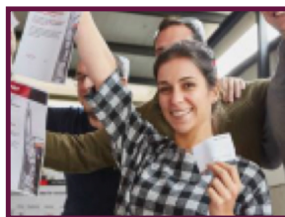
Hand-on Different installation situations and application experience



Application discussion and overview, wrap up and final entertaining Quiz



On-site Testing for Rebar



Receiving certificates

REBAR TRAINING TOPICS

- | | |
|------------------------------------|--------|
| 1. Introduction | 10 min |
| 2. What are the installation steps | 30 min |
| 3. Standard hammer drilling | 30 min |
| Break | 10 min |
| 4. Hollow drill bit drilling | 30 min |
| 5. Summary and quiz | 20 min |
| 6. Pull-out test | 20 min |

CERTIFICATION

- Individually addressed certificate
- Professionally designed certificates indicating the trainee has successfully completed training

SERVICE OFFERING AND PRICING

► AED 2,000 per group

- Group of up to 10 trainees
- Each trainee receives 1 certificate
- Training at customer jobsite

► AED 300 per individual

- Individual participation
- Each trainee receives 1 certificate
- Training at Hilti premises